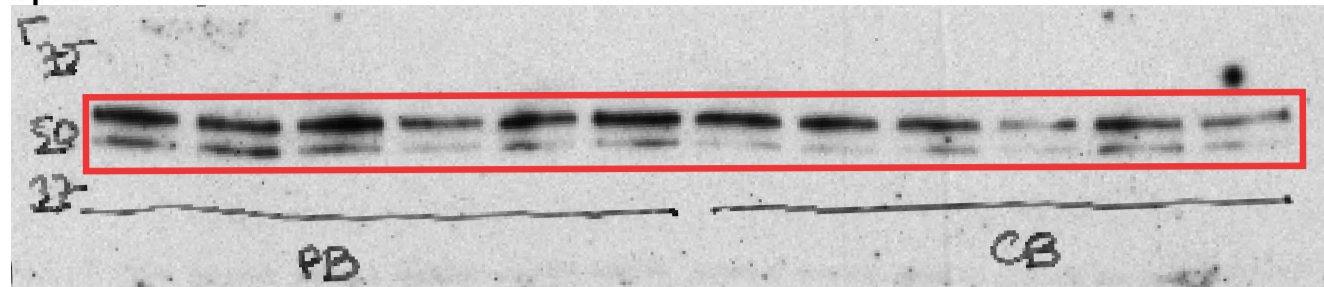
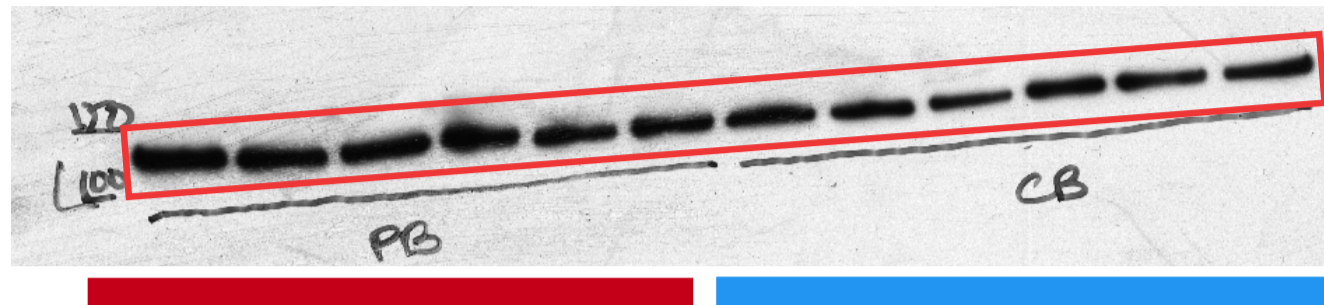


## Conditioning lesion

Spastin



Vinculin



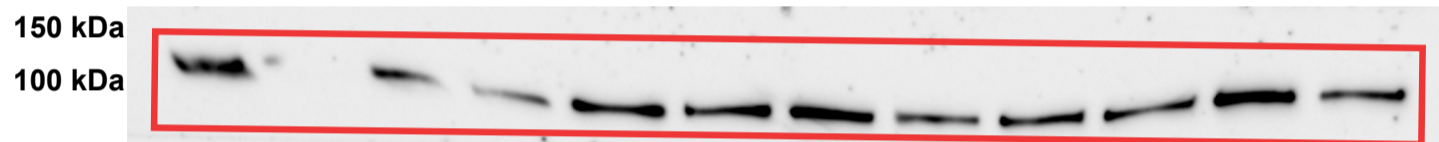
Peripheral nerve

Dorsal root

Katanin



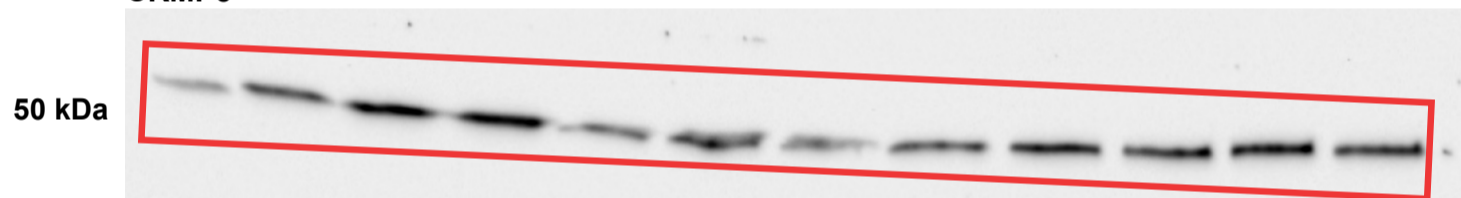
Vinculin



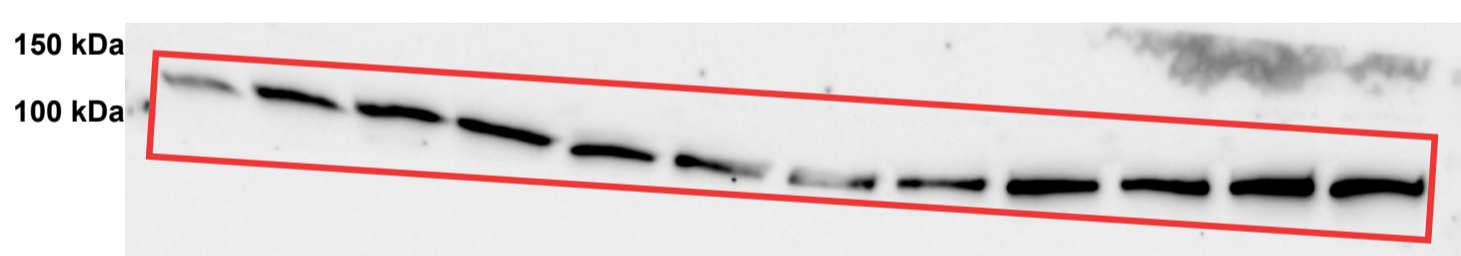
Peripheral nerve

Dorsal root

CRMP5



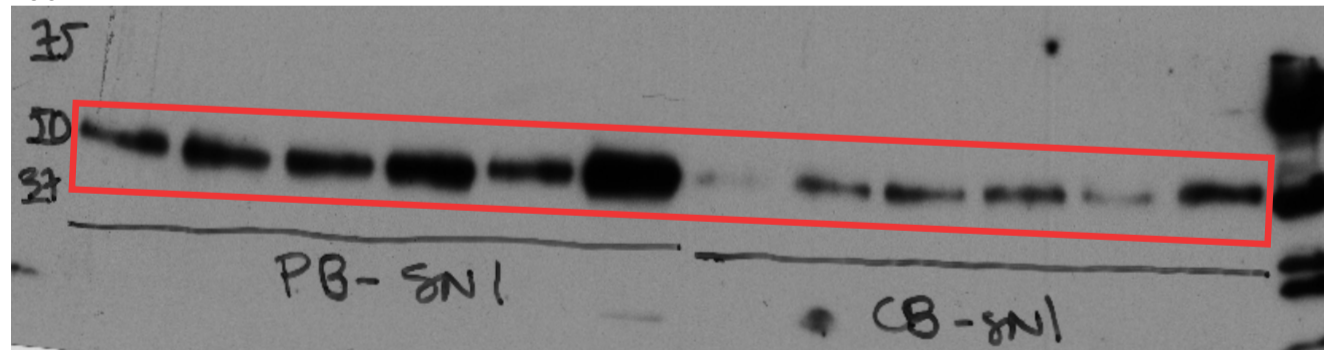
Vinculin



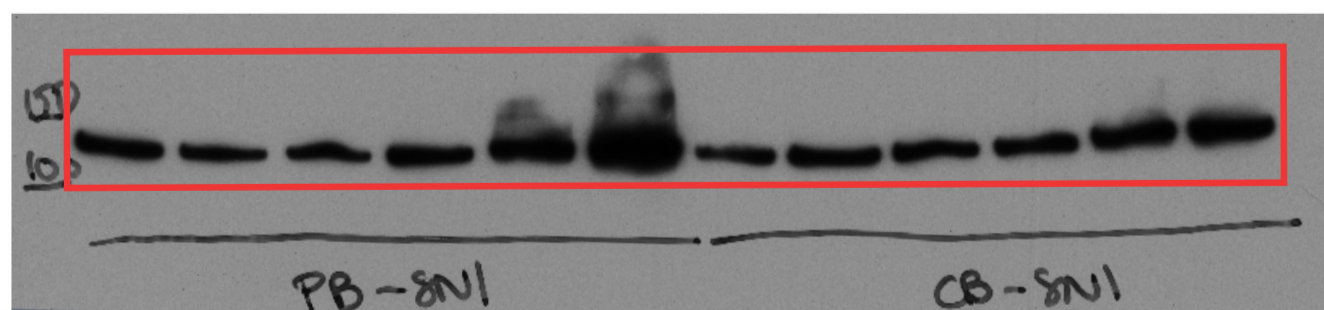
Peripheral nerve

Dorsal root

Tau



Vinculin



Peripheral nerve

Dorsal root

**Figure 4, source data 3.** Original membranes corresponding to Figure 4, panel B-E (naive) and J-M (conditioning lesion). Microtubule-associated proteins (MAPs), including spastin, katanin, tau and CRMP5 levels, in DRG peripheral nerve and dorsal root. Vinculin was used as a house-keeping protein. Molecular weights written on the left hand side.